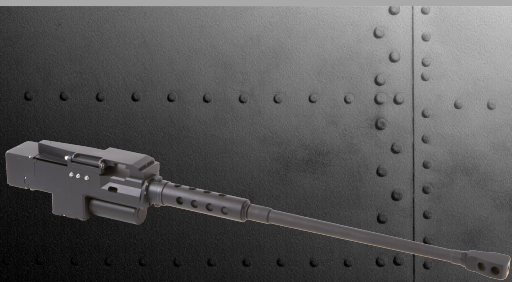


PF 50

PF



PRO FENSE



Technical Specifications

- **Applications: Vehicles, Unmanned Vehicles, Naval Vessels, Aircraft & Remote Operated Weapons Systems**
- **Non-Gas, Electrically Driven**
- **Single Shot, Sniper Mode**
- **Chain Driven - Eliminating Headspace**
- **Digital, programmable, variable rate gun control unit (GCU): Instantaneously select between two rates of fire**
- **Gun Control Unit - Removing Timing Issues**
- **System Safety: Anti-hangfire Safety**
- **Ammunition - All NATO 12.7x99mm (on standard NATO M9 links)**
- **Case Eject : Forward**
- **System Weight - 75.5 lbs (34.47 kg)**
- **Firing Rate: 450/550 SPD (with burst limiter)**
- **Power Requirements : 18-33 VDC**
- **Recoil - Less than 600 lbs**
- **Overall Length - 31.6 in (80.2 cm)**
- **Overall Width - 10.0 in (25.4 cm)**
- **Overall Height - 8.85 in (22.5 cm)**

PROFENSE, LLC | WWW.PROFENSE.COM
1801 W. KNUDSEN DR., PHOENIX, AZ, USA 85027

OFFICE: +1.480.306.4002 | FAX: + 1.480.306.4003 | SALES@PROFENSE.COM

© 2018 Profense, LLC

All of the text, illustrations, graphics and other intellectual property material in this treatment (the "Content"), are protected by U.S. Copyright Law and are owned by Profense, LLC. You may not copy, reproduce, modify, publish, distribute, transmit, transfer or create derivative works from the content without first obtaining written permission from Profense, LLC.

